

ACCURPRESS



ELITE

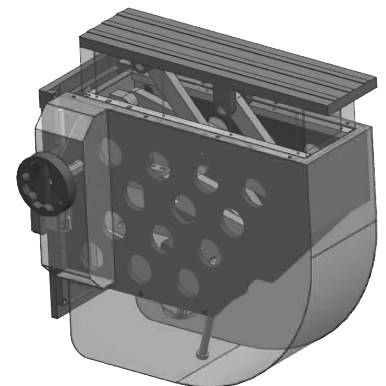


ELITE Series

ELITE, E series pure electric servo bending machine has excellent performance, provides the industry's top precision and speed, excellent ergonomics and innovative industrial design. The E series pure electric series adopts double servo drive, premium large diameter and large-lead ball screw, and the proven Roller Guiding System. Compared with similar types of bending machines on the market, our machine has a better pedigree. Ram stroke and open height and strong body design, combined with first-class running gear, ensure the best accuracy, rigidity and long-term service life.



Single Axis Light-Duty Type Sheet Follower was driving by a servo motor, motor drive the ball-screw rotation and the rod connected with ball-screw will move along with the rotation position to make the sheet follower table rotation match the sheet rotation trajectory during bending with same speed. And the device has vertical and horizontal adjustment so it can match the different trajectory basic on the die's V-opening and height changes.



ELITE - ELECTRIC SERVO PRESSBRAKE



Oversized ball screw



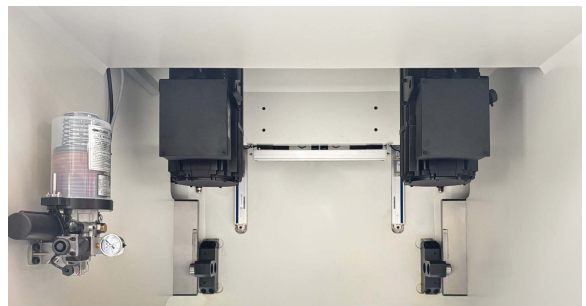
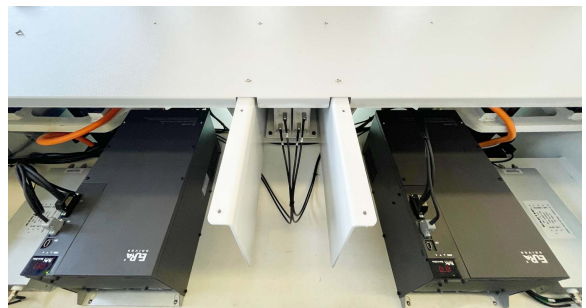
Linear scale measurement system

The machine frame, (including the ram, table and the vertical plates) are designed using world class technology and manufacturing processes to ensure the smooth movement of the machine and achieve excellent performance.

The machine adopts oversized ball screw, which provides excellent balance and guidance throughout the ram stroke, is able to easily handle the bending forces. The machine adopts the dual-position closed-loop measurement system to ensure that the position accuracy and repeatability of the ram reach the highest level.

The machine features elegant enclosure of the working area including front and rear LED lighting, and is equipped with a good heat dissipation system.

The machine adopts advanced system bus control, terminal module communication mode, simplified wiring, faster signal transmission speed, strong system antiinterference, and good scalability, ensuring that the whole machine is more stable.



Dual-servo motor drive



Standard Features

- The electrical system strictly follows national and international standards;
- The movable dual foot-switch has a novel design and advanced functions. It is equipped with an emergency switch button and also has an up and down adjustment switch for the control arm;
- Using first-class electrical components

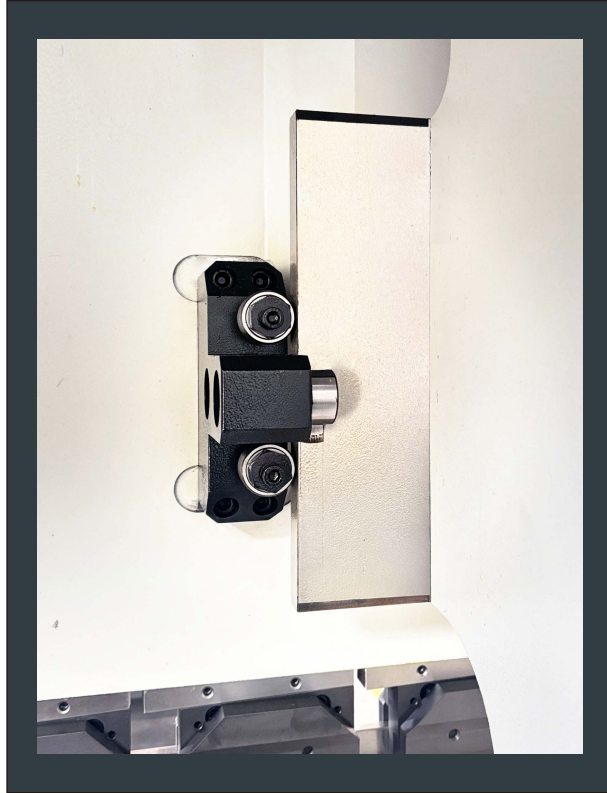


Electrical system



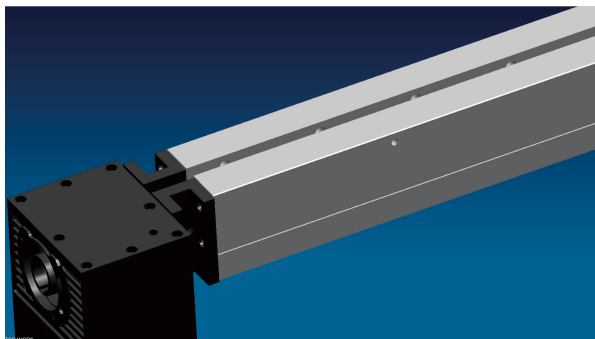
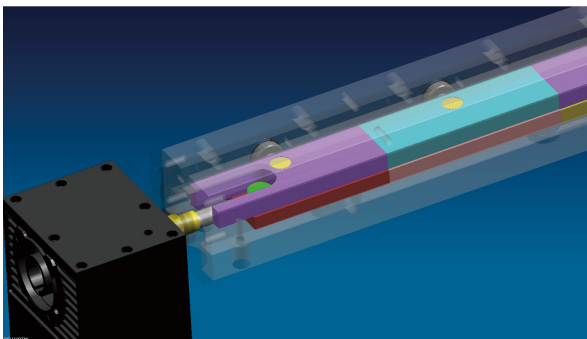
Dual foot-switch

Top level crowning system - Accurcrown®



Wheel guiding technology with patent from Accurpress

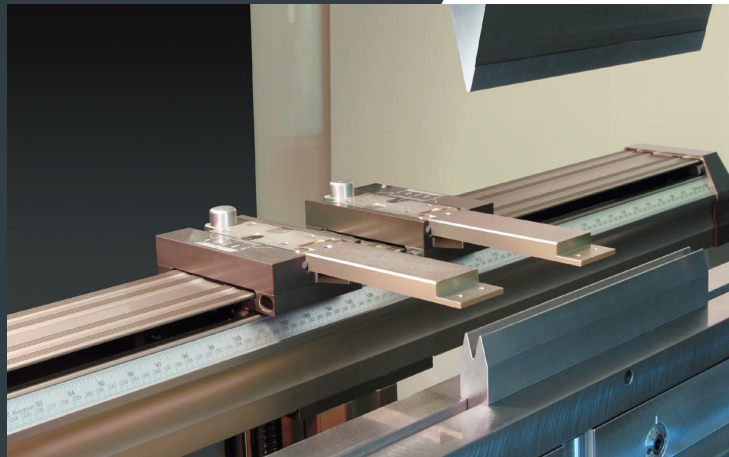
The CNC system automatically controls the axial movement of the wedge block made by precision machining to generate compensation curves, thereby ensuring that the workpiece achieves extremely high bending accuracy.





Back-gauge System

- Accurpress provides industry-leading Premium and Supreme back-gauge systems. Compared with conventional back-gauge system on market, our system has the characteristics of high rigidity, high speed, and high precision.
- The standard configuration of premium backgauge system includes X-R two axis. And can be option selected to X-X'-R-Z1-Z2 five axis.
- The standard configuration of supreme backgauge system includes X1-R1-Z1 X2-R2-Z2 six axis.
- The positioning accuracy is ensured to be within $\pm 0.02\text{mm}$, and the maximum positioning speed can reach 500mm/s .



Premium back-gauge system



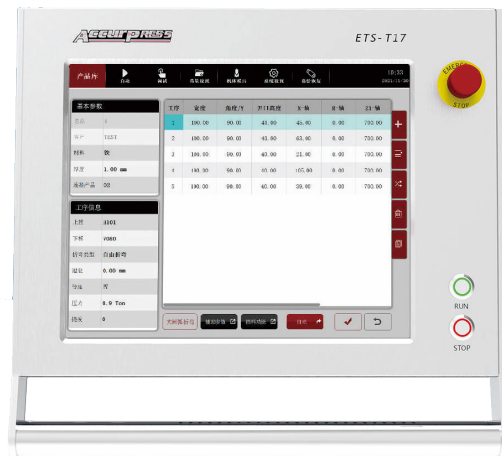
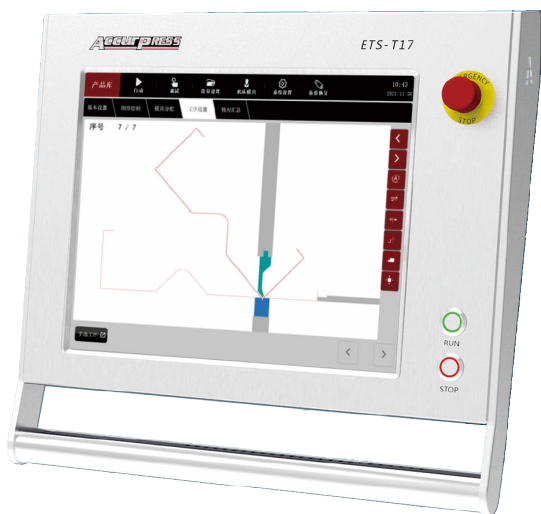
Accurpress Quick Clamp



Tooling and clamping system

ETS-T17 control system

- The new Accurpress ETS-T17 is developed based on the LINUX system and adopts a graphical touch screen interactive multi window user interface, providing the simplest CNC programming.
- ETS-T17 provides an advanced and complete 2D graphic control solution for bending machines, using a 17 inch high-resolution color TFT large screen. Various functions can be directly presented through multiple windows, making it convenient for operators to quickly access the user interface.
- Because all axis positions are automatically calculated and the bending sequence is simulated in actual proportion, the part program can be easily generated.
- ETS-T17 provides 2D programming, including automatic bending sequence calculation and collision detection.
- ETS-T17 helps operators simulate the bending process of products in a graphical way, guiding them during the operation and making their work simple and easy to learn.



Standard Features

- 17" high-resolution colour TFT
- Infrared touch screen
- LINUX operate system, Stable and reliable
- Create and edit tooling library in 2D graphics mode
- 2D graphic programming
- Automatic bending sequence, bending simulation, and workpiece collision detection
- Automatically expand size calculation
- Pressure proportional valve control
- Advanced Y-axis algorithm, applicable to both open-loop and closed-loop hydraulic circuits
- External mouse or keyboard
- 4+1 axis control
- Tandem option and Arc bending

Option Features

- 6+1 axis control; 8+1 axis control
- Sheet follower (single axis/dual axis/four axis)
- Robot bending
- 2D CAD DXF import
- Offline software
- Scanning function and scanning gun
- Support interconnection with MES management system

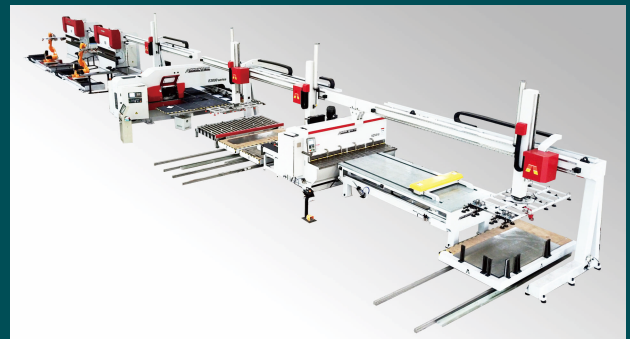


Automation unit and cell

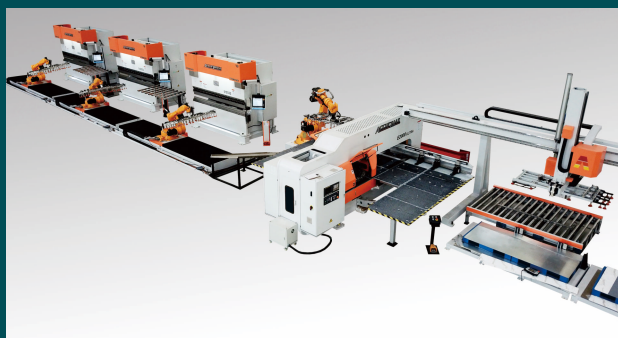
Accurpress has been devoting to research and manufacturing of sheet metal equipment for long term. We are doing effort to provide our customers the affordable and high performance automation equipment and the whole solution additionally. As one of the earliest company which enters into the sheet metal automation area, Accurpress has already delivered many hundreds of automation units or FMS line to Chinese customers, which are widely spread on the industry like Elevator, Door, Electric Power, Kitchen Appliance, Cabinet, Construction Material and Mechanical fabrication etc.



Robotic Bending Unit



Shearing-Punching-Bending FMS



Punching-Bending Flexible Manufacturing System

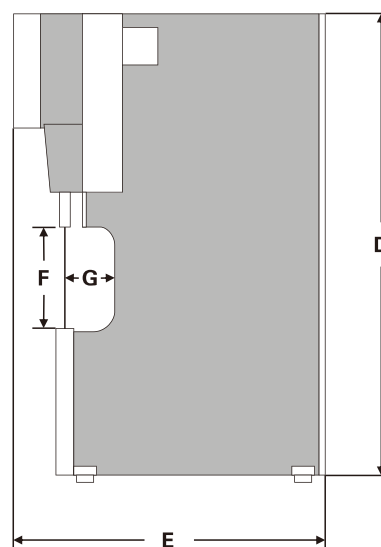
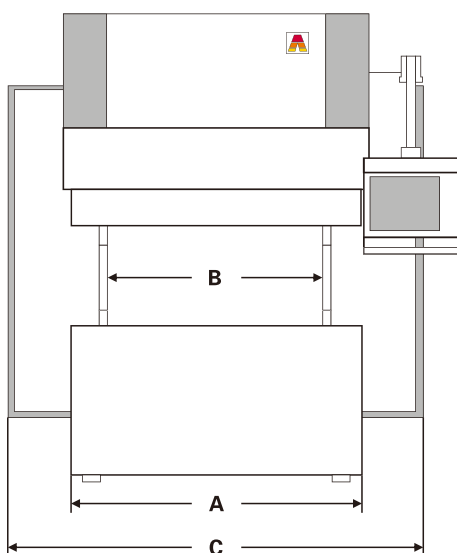


PARAMETER

ACCURPRESS ELITE

MODEL NUMBER	FORCE (TONNES)	LENGTH OF BED (mm)	DISTANCE BETWEEN FRAMES (mm)	BED HEIGHT (mm)	BED CAP WIDTH (mm)	OVERALL DIMENSIONS(mm)			RAM STROKE (mm)	RAM OPEN HEIGHT (mm)	RAM CLOSED HEIGHT (mm)	THROAT DEPTH (mm)	RAM TRAVEL SPEEDS(mm/s)			MAIN MOTOR (kw)	SHIPPING WEIGHT (Kg)
						OVERALL LENGTH (mm)	OVERALL HEIGHT (mm)	OVERALL WIDTH (mm)					FAST APPROACH (mm/s)	SLOW BEND (mm/s)	FAST RETURN (mm/s)		
E3012	30	1200	1160	860	90-140	1900	2410	1530	150	420	270	255	250	0.15-50	250	15	4,500
E4015	40	1500	1120	860	90-140	2130	2380	1600	150	420	270	255	250	0.15-50	250	11*2	4,850
E4020	40	2000	1620	860	90-140	2630	2380	1600	150	420	270	255	250	0.15-50	250	11*2	5,550
E6020	60	2000	1620	860	90-150	2630	2550	1600	200	470	270	255	250	0.15-50	250	15*2	6,200
E6025	60	2500	2100	860	90-150	3130	2550	1600	200	470	270	255	250	0.15-50	250	15*2	6,900
E10025	100	2500	2100	860	90-180	3300	2850	1960	200	470	270	460	250	0.15-50	250	17*2	9,500
E10032	100	3200	2700	850	90-180	3900	2850	1960	200	470	270	460	200	0.15-50	200	17*2	10,700
E10040	100	4000	3550	860	90-180	4750	2850	1960	200	470	270	460	200	0.15-50	200	17*2	12,000

Attention: (1) Specific specifications are subject to change without prior notice;
(2) For more technical details, please contact the manufacturer.



GLOBAL MARKET

Partnership for mutual development



Top Machining Machines

Accurpress uses the advanced machining centers like FPT, MAZAK, DMG, DROOP&REIN to produce the parts and the frames. These high precise and high performance machines can ensure Accurpress every machine to get good accuracy and quality.



Global market distribution



U.S.A., Canada, Mexico, China, India, Russia, Japan, Korea, Singapore, Malaysia, Vietnam, Australia.....





Accurpress (Suzhou) Machinery Co.,Ltd

Address: No.1 Aike Road, Shaxi Industrial Park, Taicang District, Jiangsu Province 215421 P.R. China

Tel: +86-(0) 512 53212588 53375686

Fax: +86-(0) 512 53223910

Sales Hotline: 4009002117

Service hotline: 4008563118

Web: www.accupress-china.com