

**AccurPRESS**



**PRESTIGE**





# Prestige Series

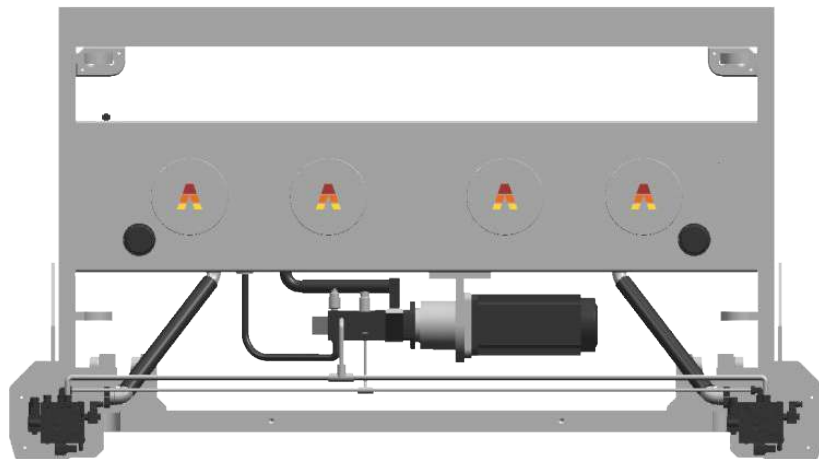
## Frame Structure

- New modern industrial design, top level craftsmanship with pleasing appearance;
- Heavy duty frame, sturdy and durable;
- Advanced production technology, strict quality control;
- RAM sliding structure, smooth, fast, and convenient;
- RAM designed with large stroke and daylight;
- Fully enclosed design, beautiful and safe, equipped with front and rear LED lighting



## Advantages of the PRESTIGE

- Low heat, low noise, low energy consumption and high speed and high accuracy!
- Servo motor driven hydraulic pump yields significant energy saving over the traditional AC-motor pump design. Saving 40% energy.
- Low heat to extend life of the hydraulic components and oil.
- Approach and return speeds of 200mm/sec.
- Improved accuracy of +/- 0.005mm.  
Using a single servo motor instead of a conventional motor, it has fast braking speed and can quickly cut off pressure and flow in emergency situations.
- The noise significantly decreases when the Ram is idle, Approach, Bending and returning, making the operation smoother.
- Equipped with overload protection function.



Servo Driven Pump Hydraulics



# Standard Features

- The electrical system strictly follows national and international standards;
- The movable dual foot-switch has a novel design and advanced functions. It is equipped with an emergency switch button and also has an up and down adjustment switch for the control arm;
- Using first-class electrical components



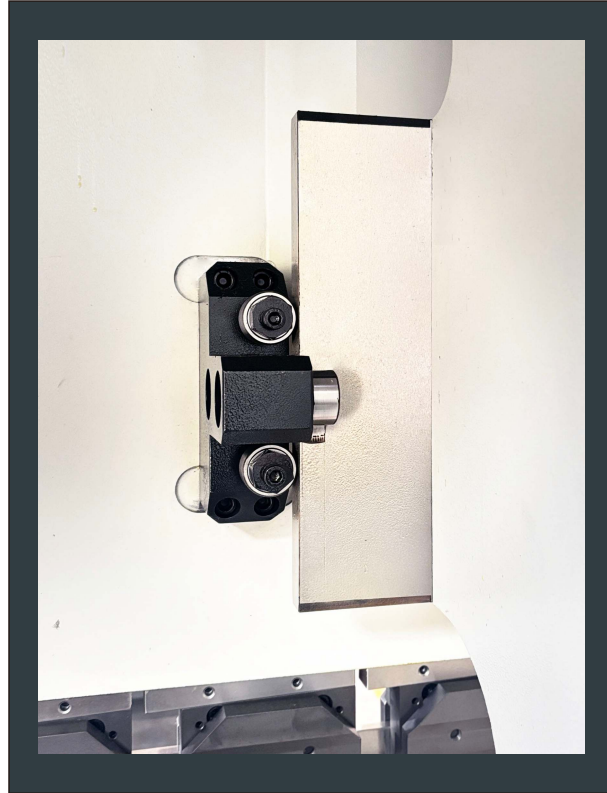
Electrical system



Dual foot-switch

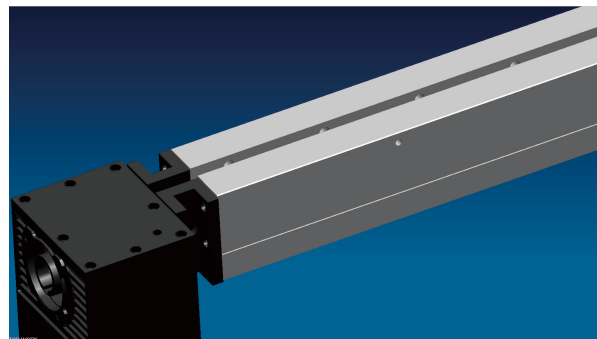
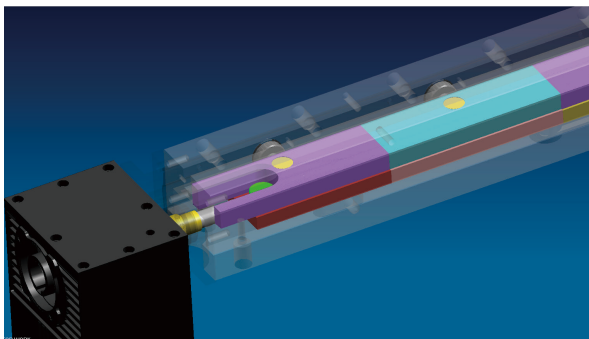


## Top level crowning system - Accurcrown®



Wheel guiding technology with patent from Accurpress

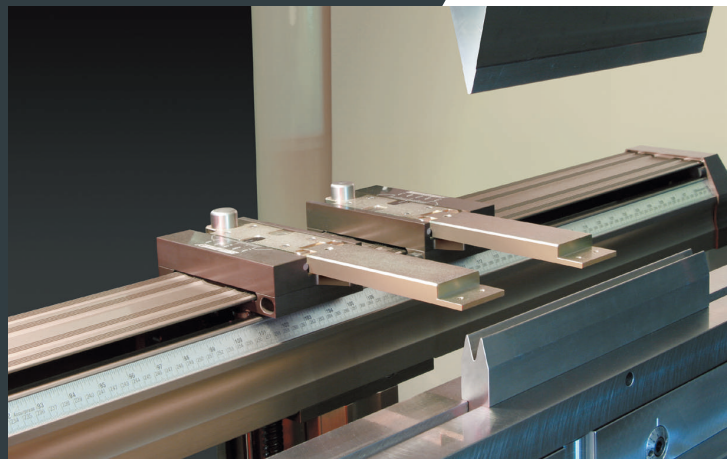
The CNC system automatically controls the axial movement of the wedge block made by precision machining to generate compensation curves, thereby ensuring that the workpiece achieves extremely high bending accuracy.





# Back-gauge System

- Accurpress provides industry-leading Premium and Supreme back-gauge systems. Compared with conventional back-gauge system on market, our system has the characteristics of high rigidity, high speed, and high precision.
- The standard configuration of premium backgauge system includes X-R two axis. And can be option selected to X-X'-R-Z1-Z2 five axis.
- The standard configuration of supreme backgauge system includes X1-R1-Z1 X2-R2-Z2 six axis.
- The positioning accuracy is ensured to be within  $\pm 0.02\text{mm}$ , and the maximum positioning speed can reach  $500\text{mm/s}$ .



Premium back-gauge system



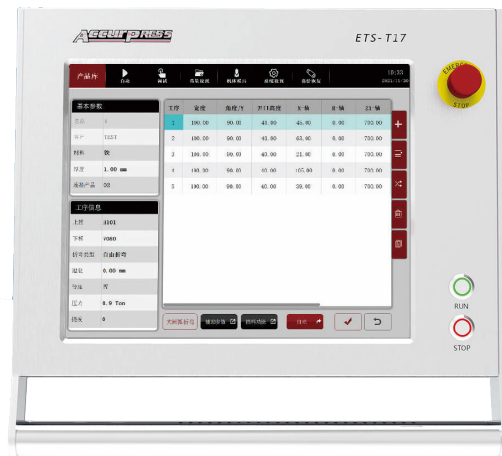
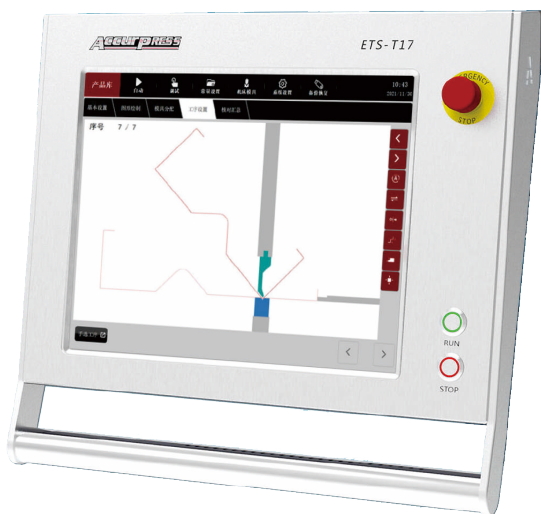
Accurpress Quick Clamp



Tooling and clamping system

# ETS-T17 control system

- The new Accurpress ETS-T17 is developed based on the LINUX system and adopts a graphical touch screen interactive multi window user interface, providing the simplest CNC programming.
- ETS-T17 provides an advanced and complete 2D graphic control solution for bending machines, using a 17 inch high-resolution color TFT large screen. Various functions can be directly presented through multiple windows, making it convenient for operators to quickly access the user interface.
- Because all axis positions are automatically calculated and the bending sequence is simulated in actual proportion, the part program can be easily generated.
- ETS-T17 provides 2D programming, including automatic bending sequence calculation and collision detection.
- ETS-T17 helps operators simulate the bending process of products in a graphical way, guiding them during the operation and making their work simple and easy to learn.



## Standard Features

- 17" high-resolution colour TFT
- Infrared touch screen
- LINUX operate system, Stable and reliable
- Create and edit tooling library in 2D graphics mode
- 2D graphic programming
- Automatic bending sequence, bending simulation, and workpiece collision detection
- Automatically expand size calculation
- Pressure proportional valve control
- Advanced Y-axis algorithm, applicable to both open-loop and closed-loop hydraulic circuits
- External mouse or keyboard
- 4+1 axis control
- Tandem option and Arc bending

## Option Features

- 6+1 axis control; 8+1 axis control
- Sheet follower (single axis/dual axis/four axis)
- Robot bending
- 2D CAD DXF import
- Offline software
- Scanning function and scanning gun
- Support interconnection with MES management system



# Automation unit and cell

Accurpress has been devoting to research and manufacturing of sheet metal equipment for long term.

We are doing effort to provide our customers the affordable and high performance automation equipment and the whole solution additionally. As one of the earliest company which enters into the sheet metal automation area, Accurpress has already delivered many hundreds of automation units or FMS line to Chinese customers, which are widely spread on the industry like Elevator, Door, Electric Power, Kitchen Appliance, Cabinet, Construction Material and Mechanical fabrication etc.



**Robotic Bending Unit**



**Shearing-Punching-Bending FMS**



**Punching-Bending Flexible Manufacturing System**



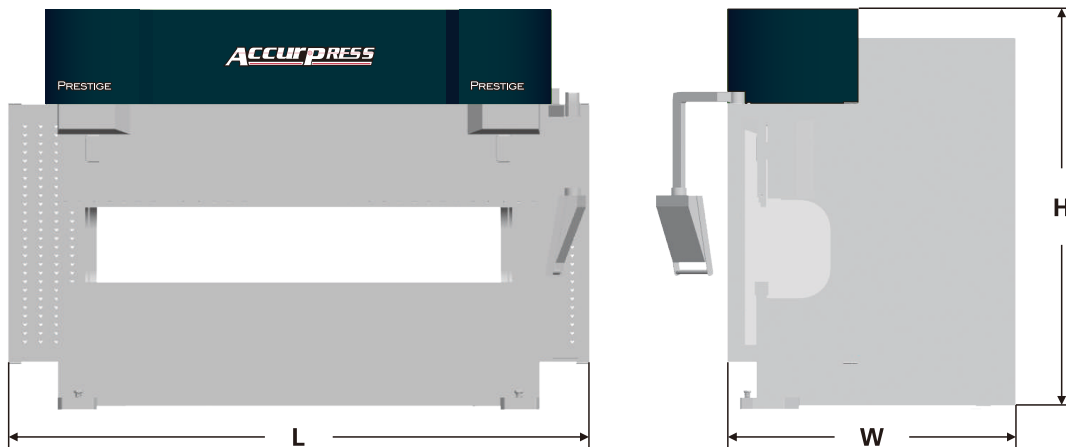


# PARAMETER

## ACCURPRESS PRESTIGE

MODEL NUMBER	FORCE (TONNES)	LENGTH OF BED (mm)	DISTANCE BETWEEN FRAMES (mm)	BED HEIGHT (mm)	BED CAP WIDTH (mm)	OVERALL DIMENSIONS(mm)			RAM STROKE (mm)	RAM OPEN HEIGHT (mm)	RAM CLOSED HEIGHT (mm)	THROAT DEPTH (mm)	RAM TRAVEL SPEEDS(mm/s)			MAIN MOTOR (Kw)	SHIPPING WEIGHT (Kg)
						OVERALL LENGTH (mm)	OVERALL HEIGHT (mm)	OVERALL WIDTH (mm)					FAST APPROACH (mm/s)	SLOW BEND (mm/s)	FAST RETURN (mm/s)		
504015	40	1500	1260	865	90-140	2230	2430	1490	200	460	260	320	200	0-16	200	6.7	3,550
504020	40	2000	1700	865	90-140	2670	2430	1490	200	460	260	320	200	0-16	200	6.7	3,850
504025	40	2500	2100	865	90-140	3160	2430	1490	200	460	260	320	200	0-16	200	6.7	4,450
506320	63	2000	1700	865	90-150	2780	2500	1520	200	460	260	320	200	0-15	200	6.7	4,250
506325	63	2500	2100	865	90-150	3180	2500	1520	200	460	260	320	200	0-15	200	6.7	4,900
506332	63	3200	2700	865	90-150	3880	2500	1520	200	460	260	320	200	0-15	200	6.7	6,000
510025	100	2500	2100	865	90-180	3300	2815	1920	250	520	270	460	200	0-15	200	7.9	8,500
510032	100	3200	2700	865	90-180	3900	2815	1920	250	520	270	460	200	0-15	200	7.9	9,600
510040	100	4000	3550	865	90-180	4750	2815	1920	250	520	270	460	200	0-15	200	7.9	11,000
516025	160	2500	2100	865	90-220	3340	2815	1950	250	520	270	460	200	0-15	200	15.7	10,000
516032	160	3200	2700	865	90-220	3920	2815	1950	250	520	270	460	200	0-15	200	15.7	12,000
516040	160	4000	3550	865	90-220	4770	2815	1950	250	520	270	460	200	0-15	200	15.7	14,000
520032	200	3200	2700	865	100-220	3940	2885	2080	250	520	270	460	200	0-15	200	21.4	14,500
520040	200	4000	3550	865	100-220	4790	2885	2080	250	520	270	460	200	0-15	200	21.4	16,000
520050	200	5000	4100	965	100-220	5840	2985	2080	250	520	270	460	200	0-15	200	21.4	19,500
525032	250	3200	2700	965	100-240	4060	3085	2120	250	520	270	460	180	0-13	180	21.4	18,300
525040	250	4000	3550	965	100-240	4910	3085	2120	250	520	270	460	180	0-13	180	21.4	20,500
525050	250	5000	4100	965	100-240	5860	3185	2120	250	520	270	460	180	0-13	180	21.4	25,000

Attention: (1) Specific specifications are subject to change without prior notice;  
 (2) For more technical details, please contact the manufacturer.





# GLOBAL MARKET

Partnership for mutual development



## Top Machining Machines

Accurpress uses the advanced machining centers like FPT, MAZAK, DMG, DROOP&REIN to produce the parts and the frames. These high precise and high performance machines can ensure Accurpress every machine to get good accuracy and quality.



## Global market distribution



U.S.A., Canada, Mexico, China, India, Russia, Japan, Korea, Singapore, Malaysia, Vietnam, Australia.....





## **Accurpress (Suzhou) Machinery Co.,Ltd**

Address: No.1 Aike Road, Shaxi Industrial Park, Taicang District, Jiangsu Province 215421 P.R. China

Tel: +86-(0) 512 53212588 53375686

Fax: +86-(0) 512 53223910

Sales Hotline: 4009002117

Service hotline: 4008563118

Web: [www.accurpress-china.com](http://www.accurpress-china.com)